

# HFEK PIN MAPPING

## PIN REQUIREMENTS

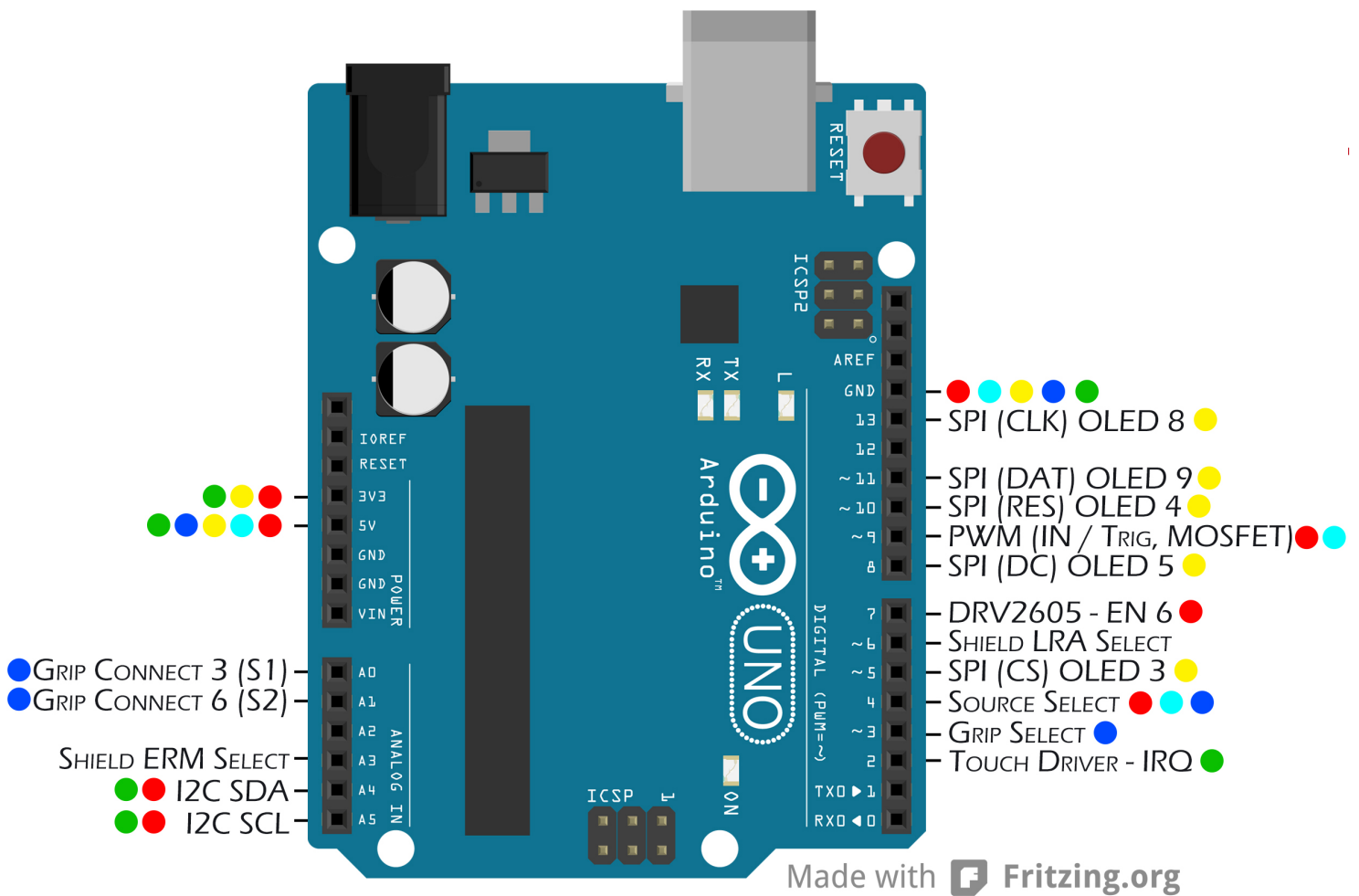
**OLED** 3V3, 5V, GND, 5, 8, 10, 11, 13

**CAPACITIVE TOUCH** 3V3, 5V, GND, A4, A5, 2

**HAPTIC GRIP** 5V, GND, A0, A1, 3, 4

**MOSFET** 5V, GND, 4, 9

**DRV2605** 3V3, 5V, GND, A4, A5, 4, 7, 9



## I2C Addresses

Using 7-bit Addressing

**Capacitive Touch Driver MPR121** 0x5D

**Haptic Driver DRV2605L** 0x5A